

Case 1

Dr. Toshi Mishra

Consultant Histopathologist

Bombay Hospital and Medical Research Centre

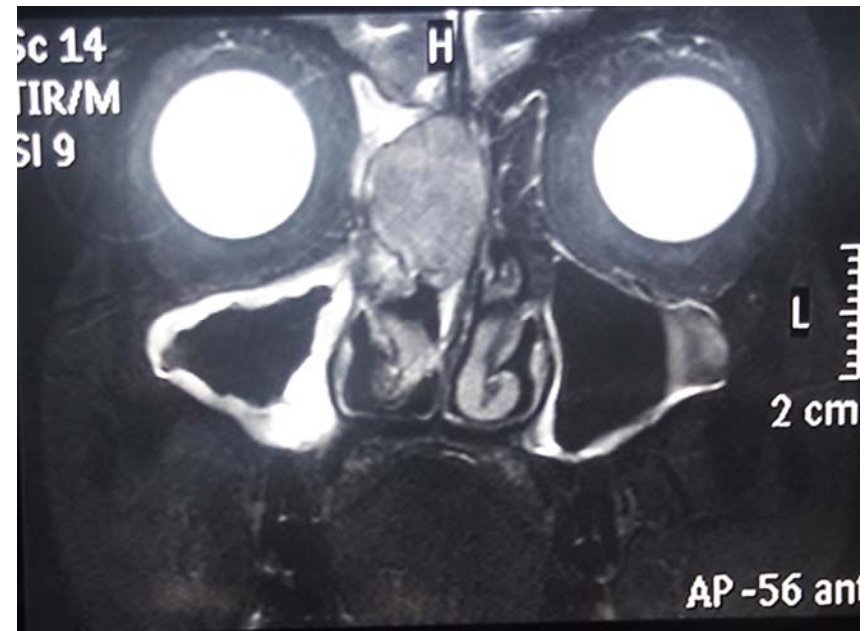
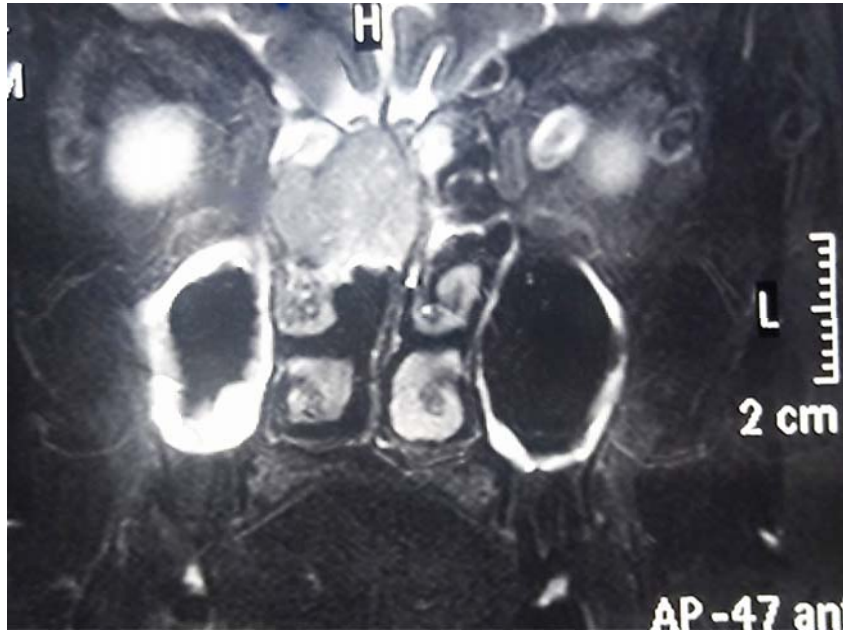
History

- A 50 year old female presented with complaints of
 - Bleeding from nose, facial pain and nasal blockage for three weeks
- No other significant past history
- DNE: Right nasal mass with bleeding from medial end of middle turbinate

Imaging

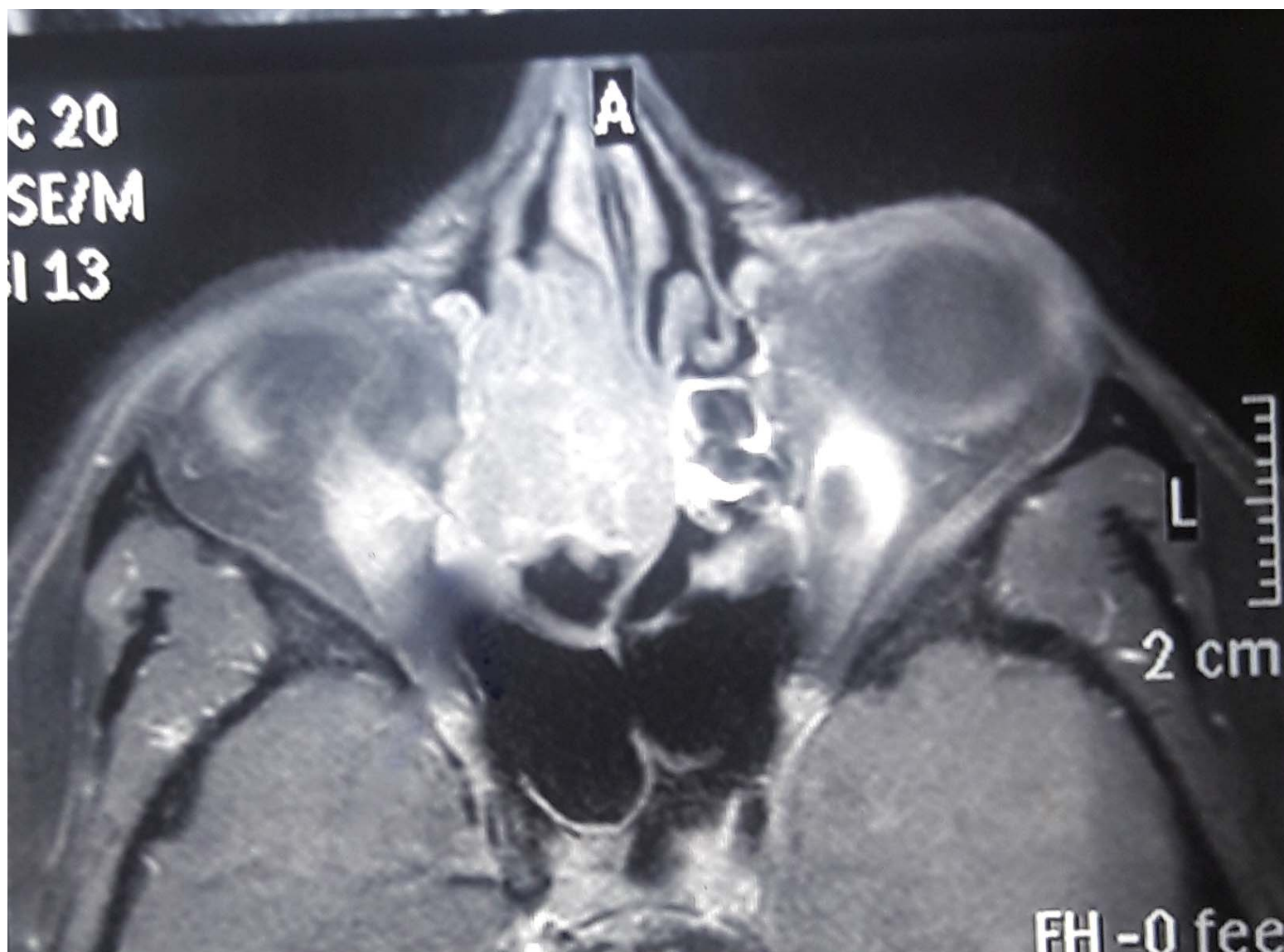
- MRI: An expansile, mildly lobulated, well demarcated lesion in the right nasoethmoidal region, inseparable from the ipsilateral superior and middle turbinates
- It measured 2.7 x 1.9 x 3.0 cms
- Iso to hyperintense on T1W and T2W images with heterogenous post contract enhancement

MRI

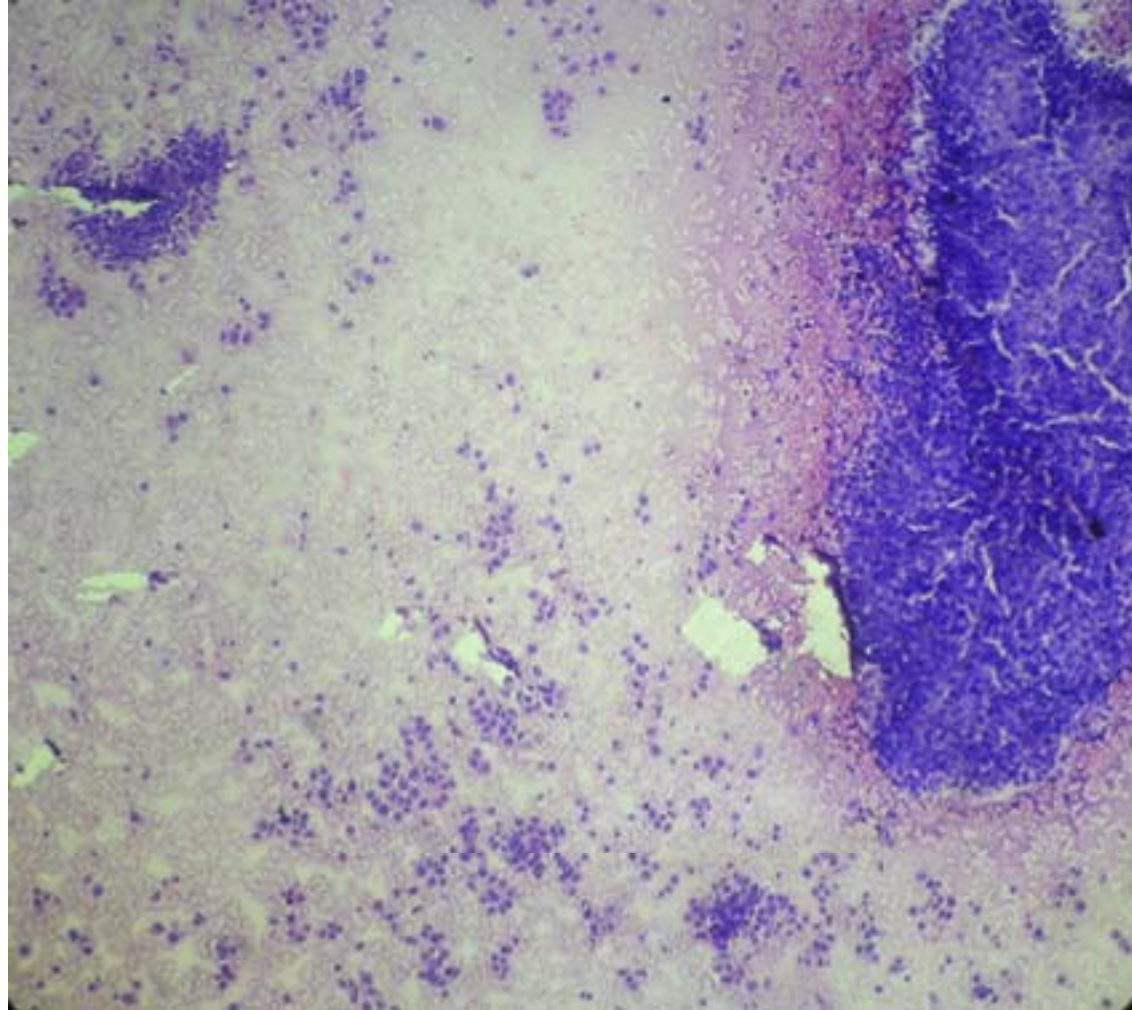


T1W

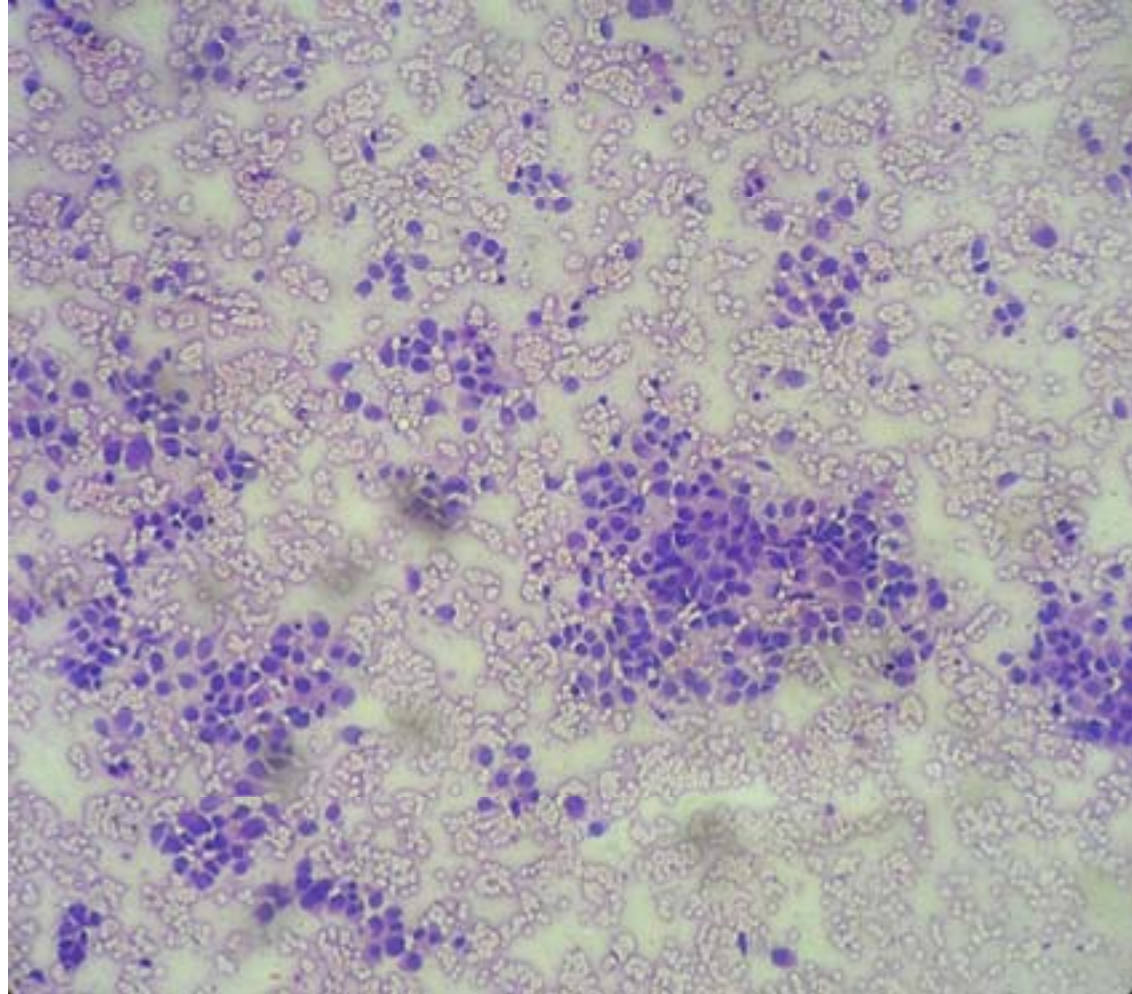
MRI



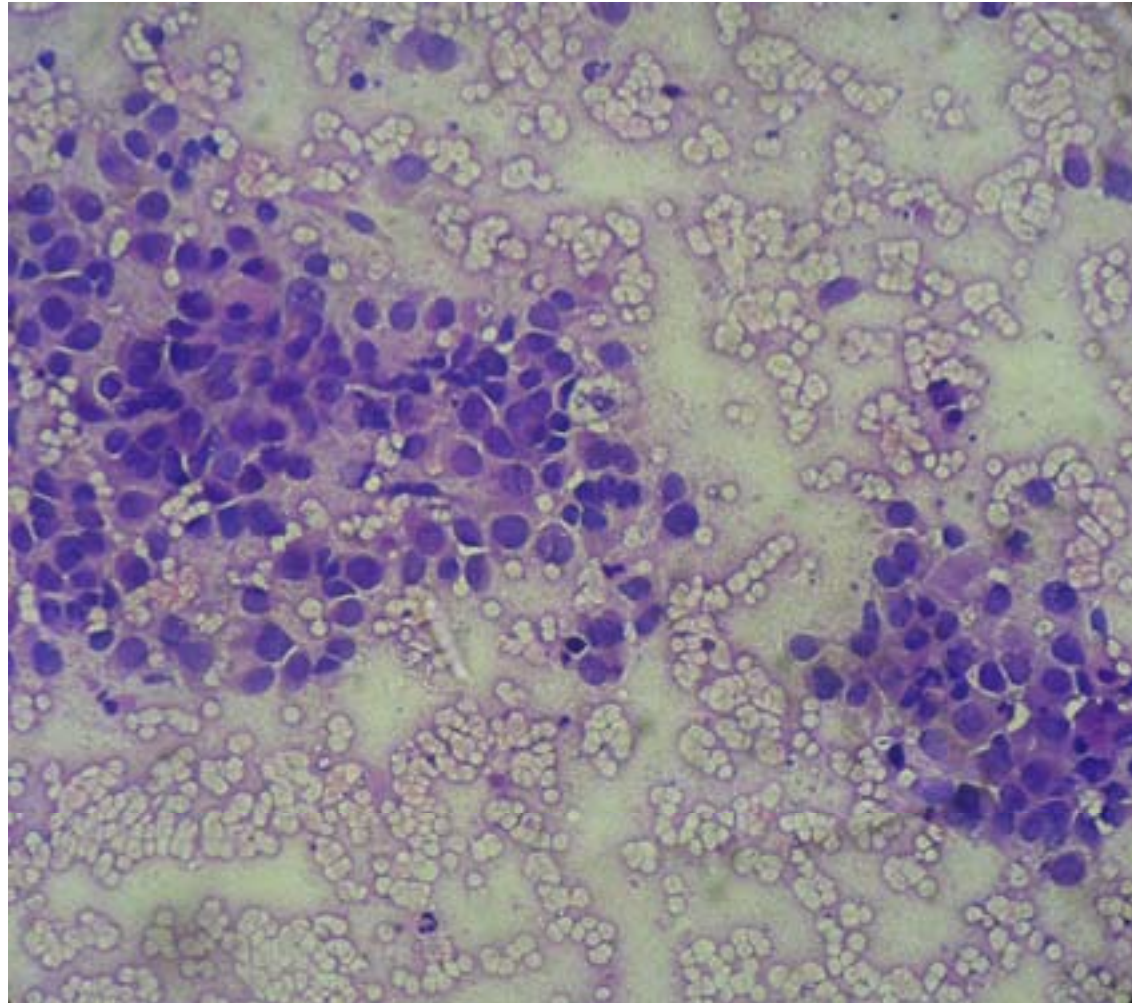
Imprint smears



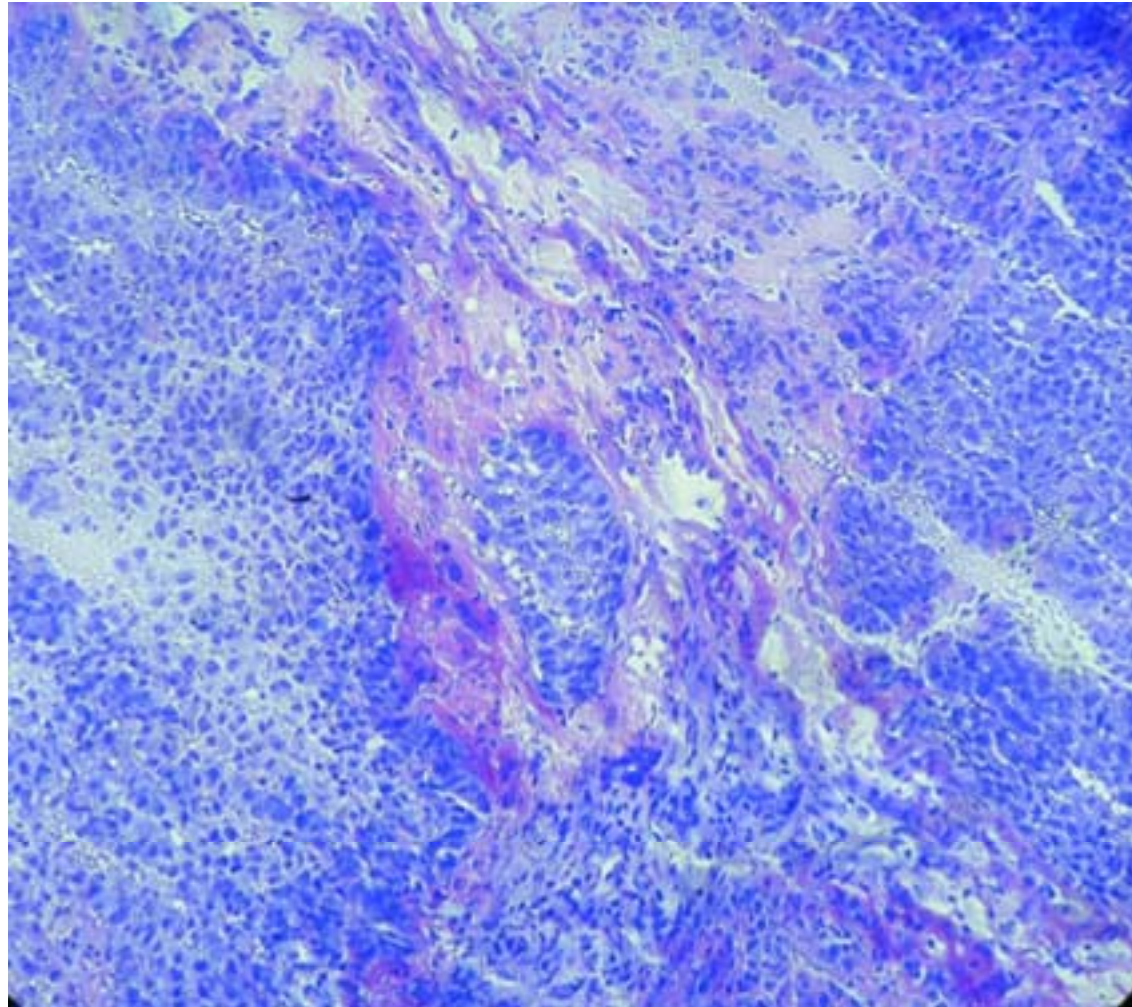
Imprint smears



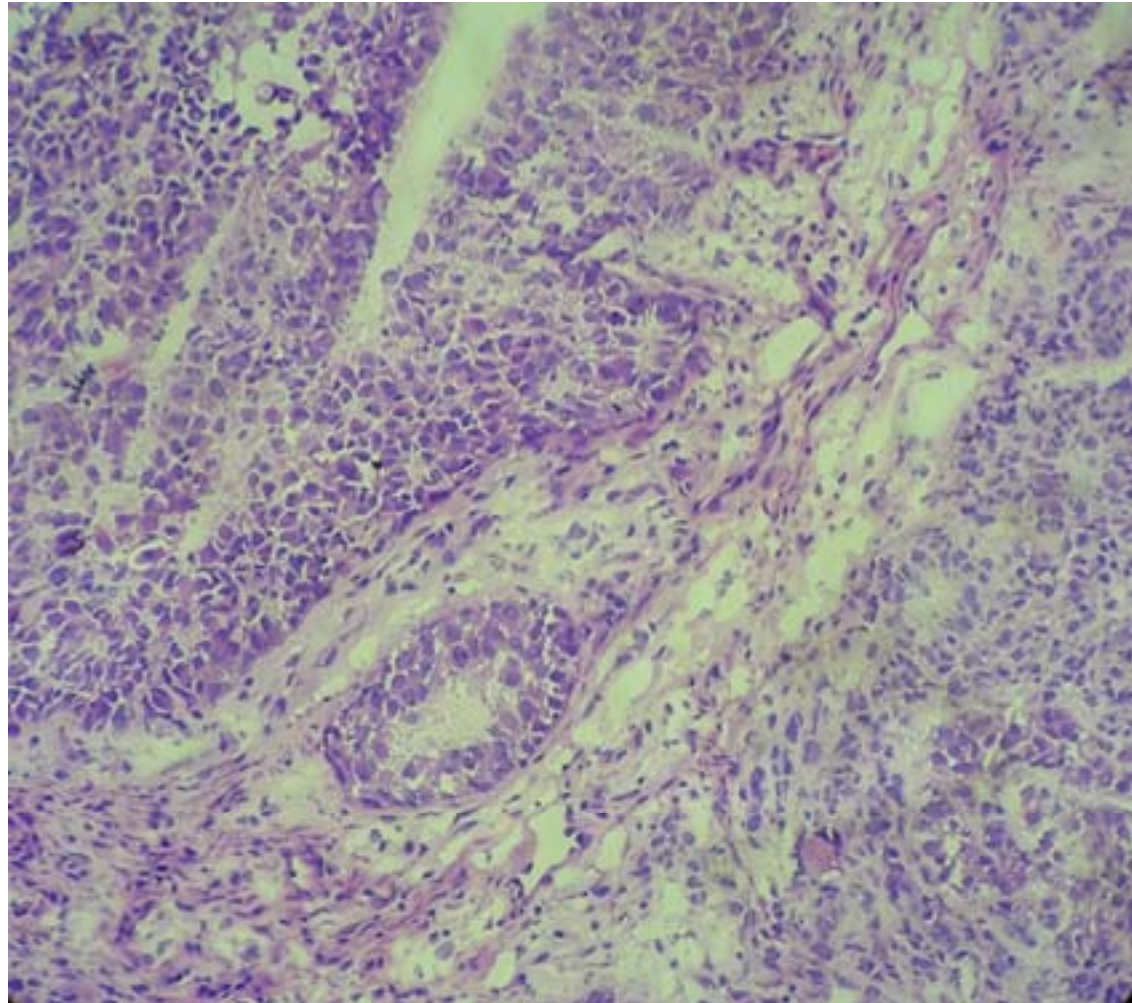
Imprint smears



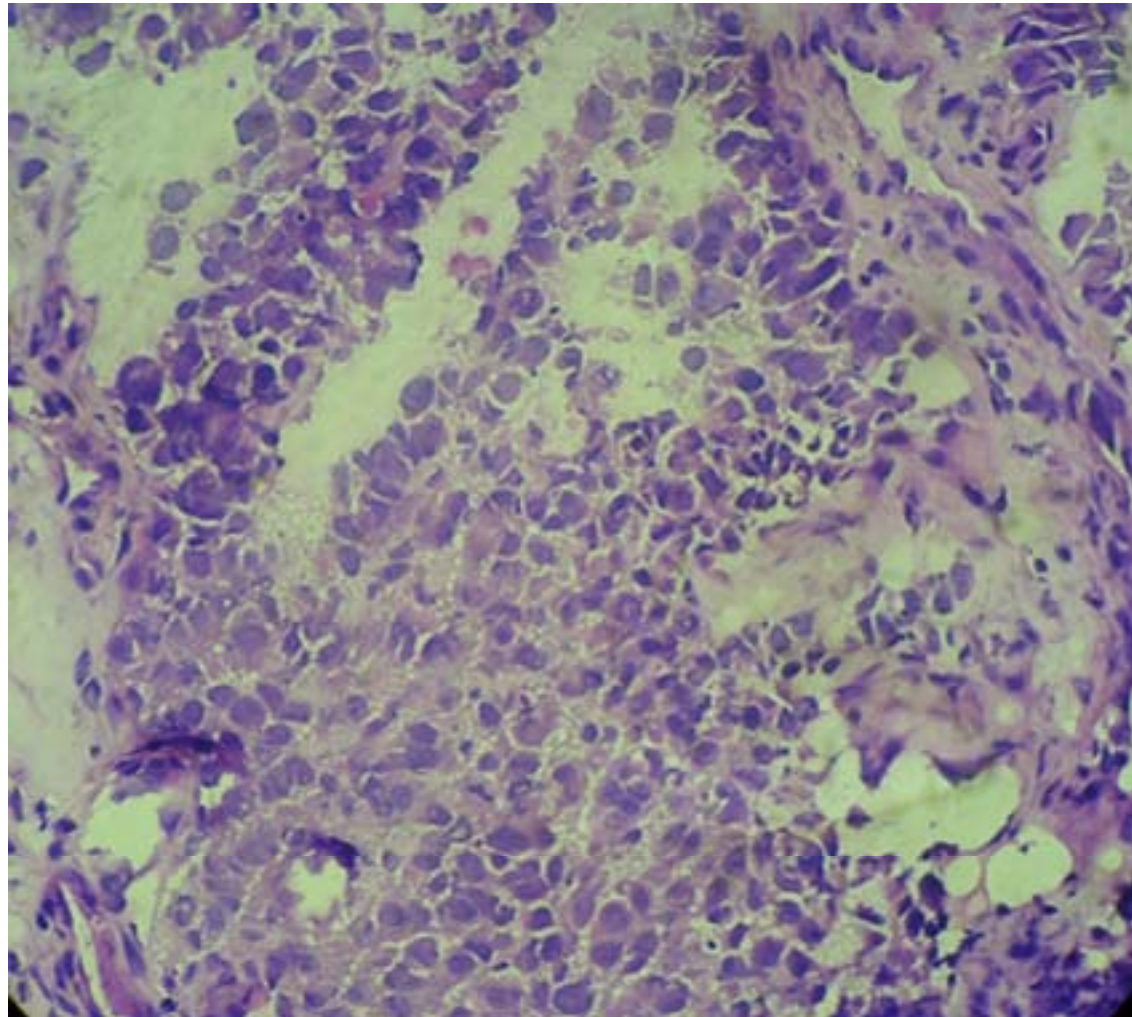
Frozen Section (toluidine blue)



Frozen Section (H&E)



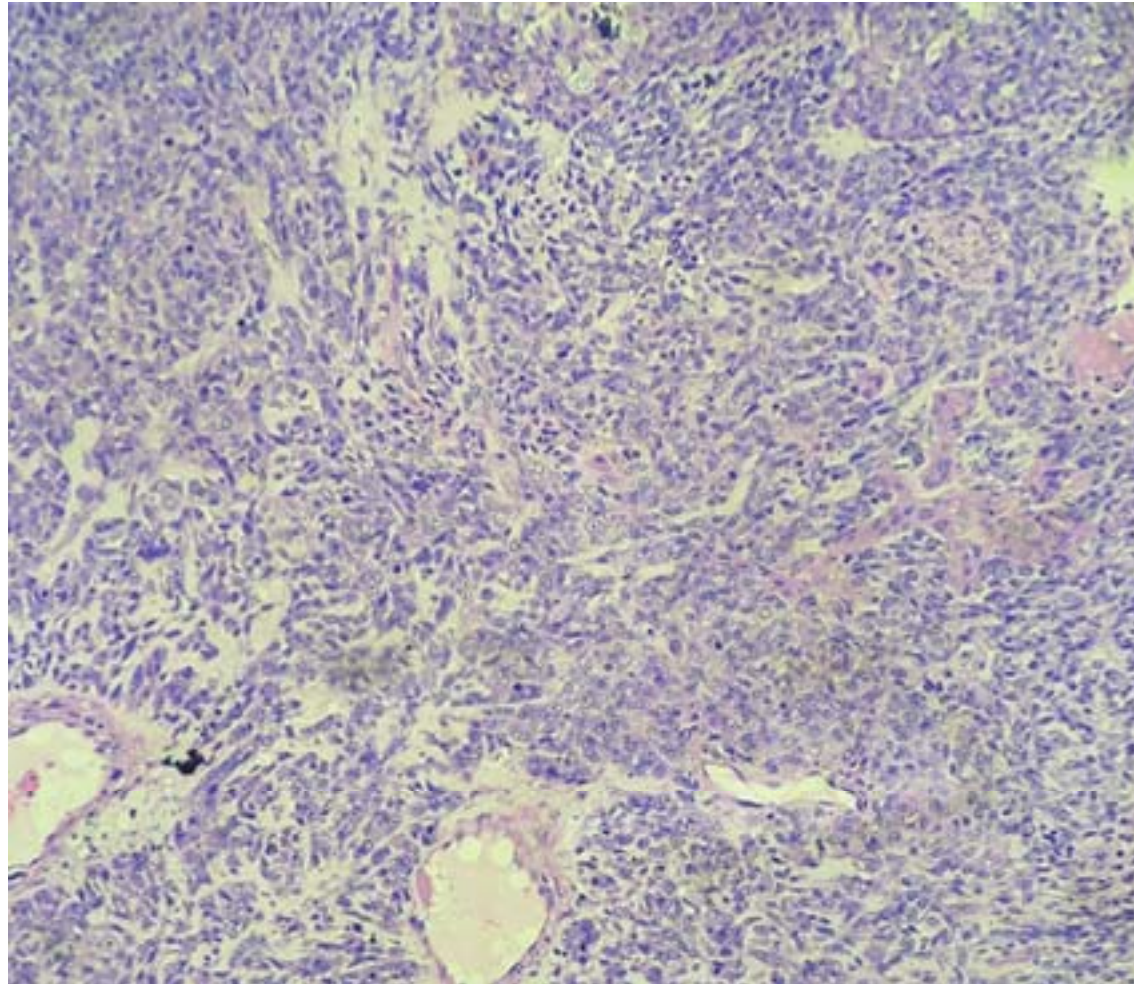
Frozen Section (H&E)



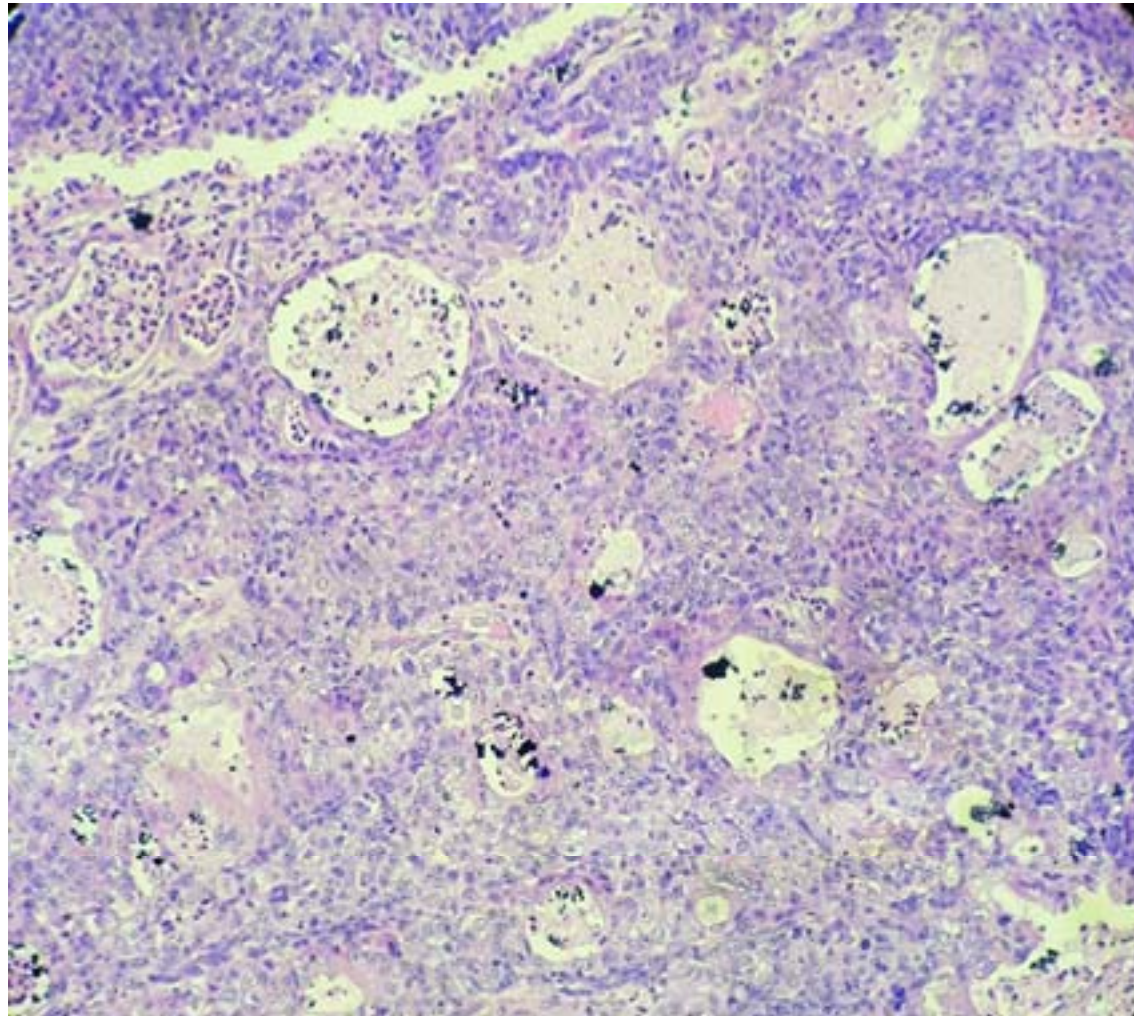
Frozen Section - Diagnosis

- Poorly differentiated sino-nasal tumour
- Final report on H&E sections and immunohistochemistry

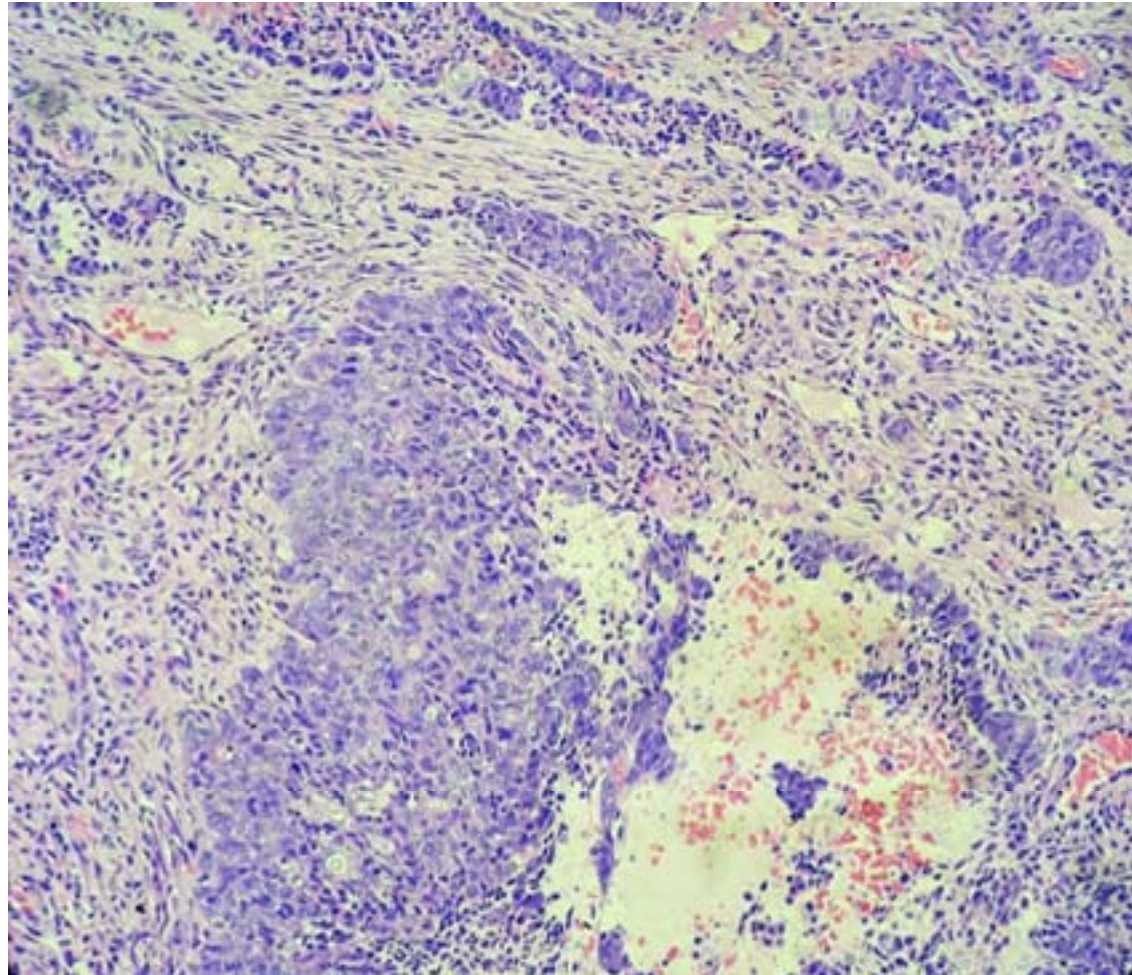
H&E



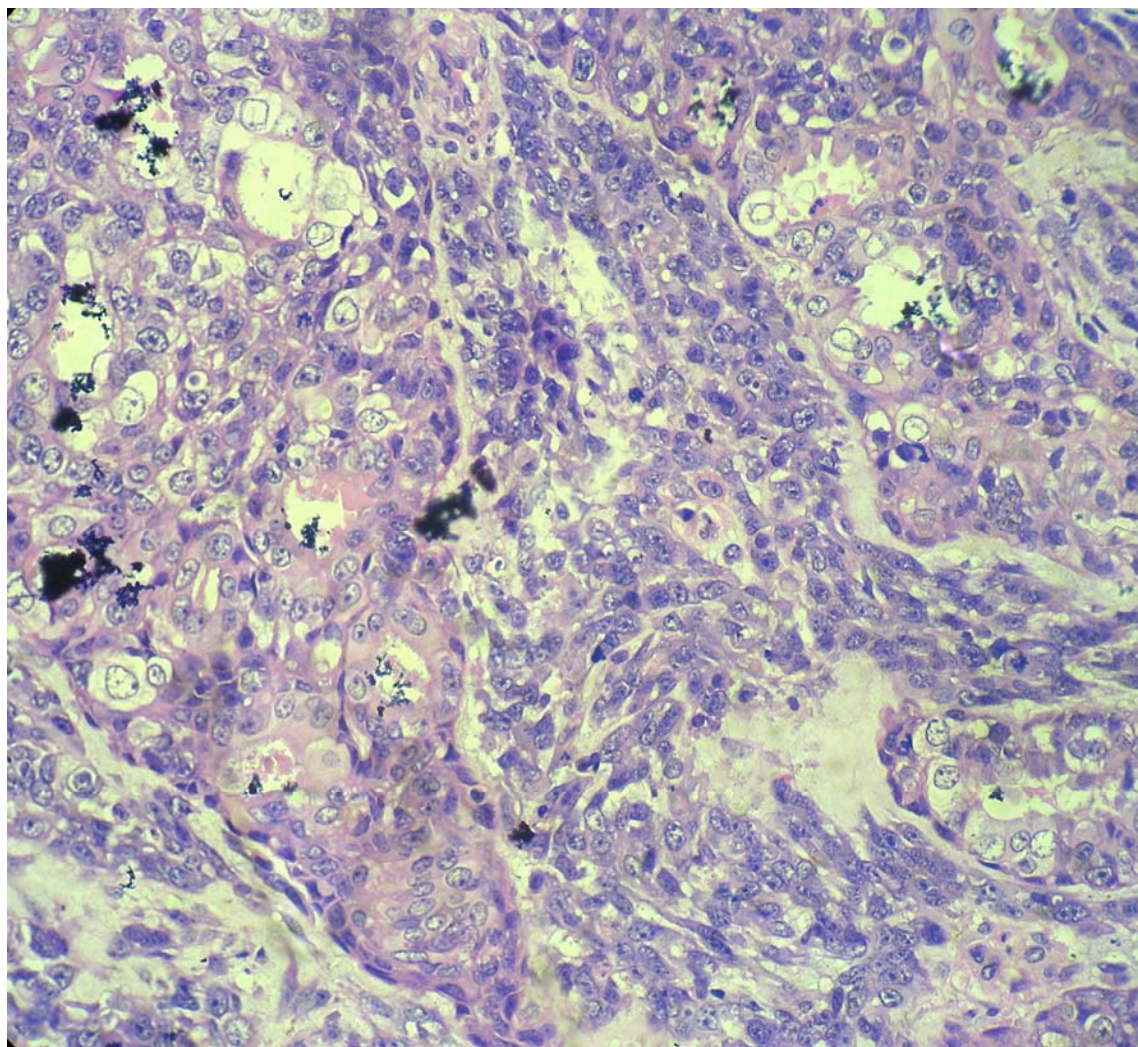
H&E



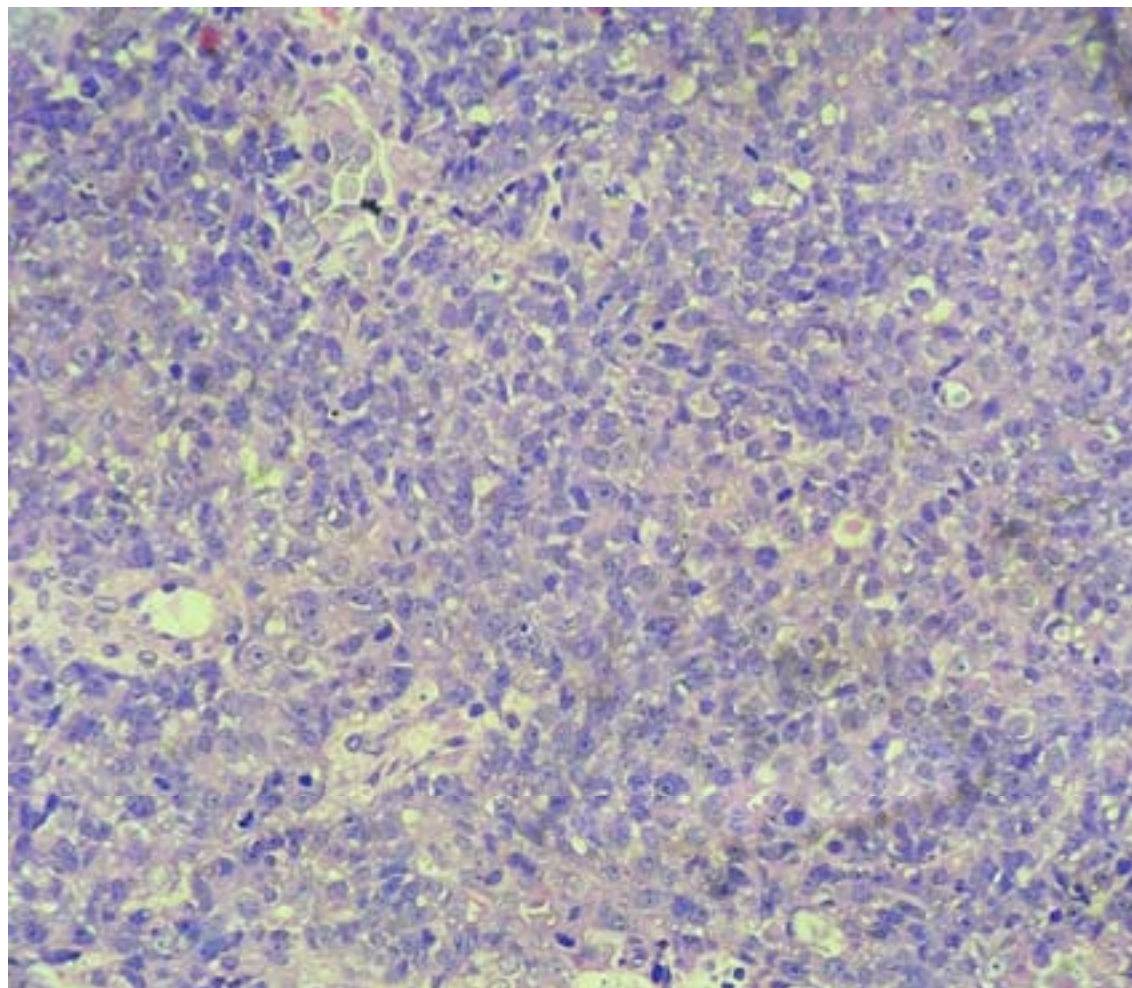
H&E



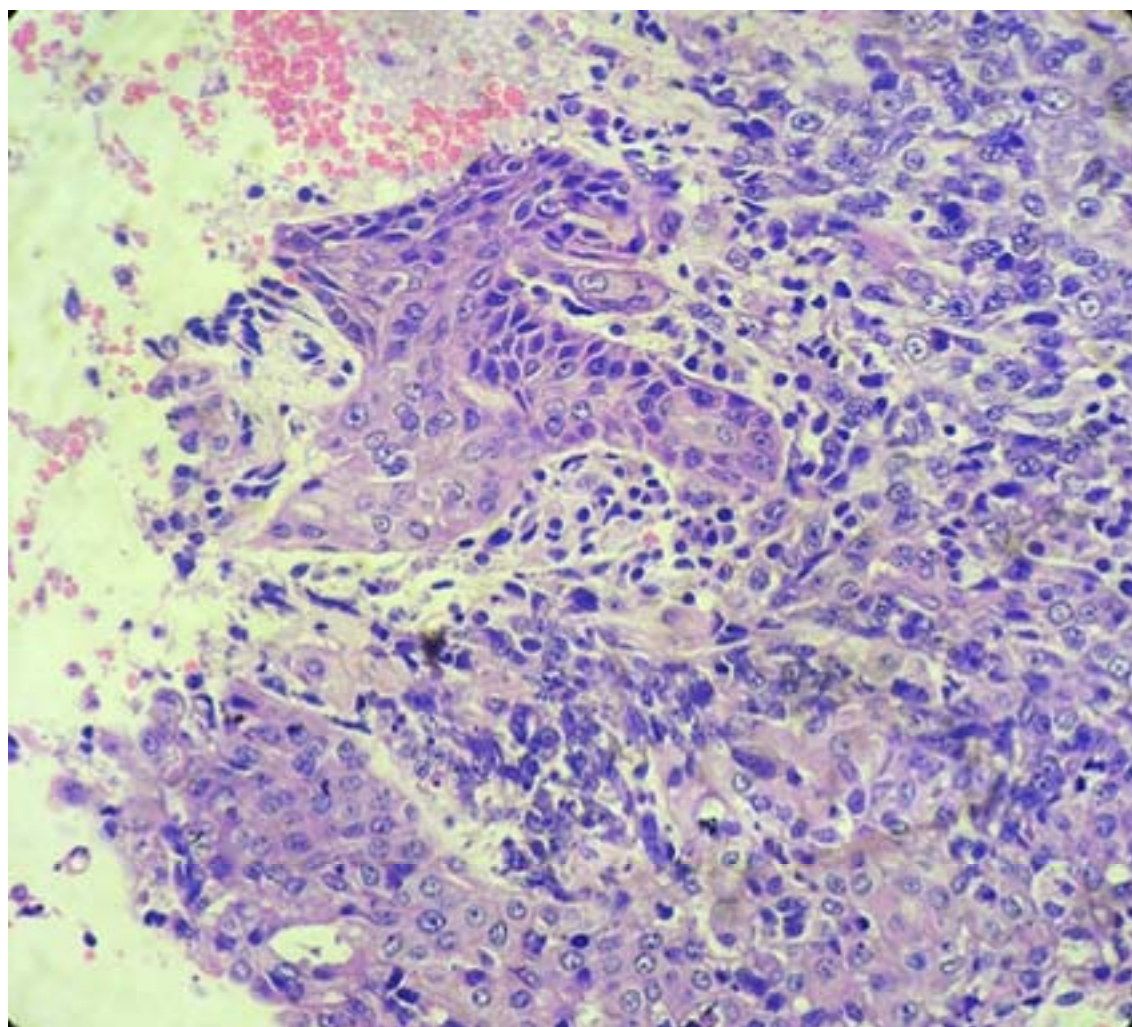
H&E



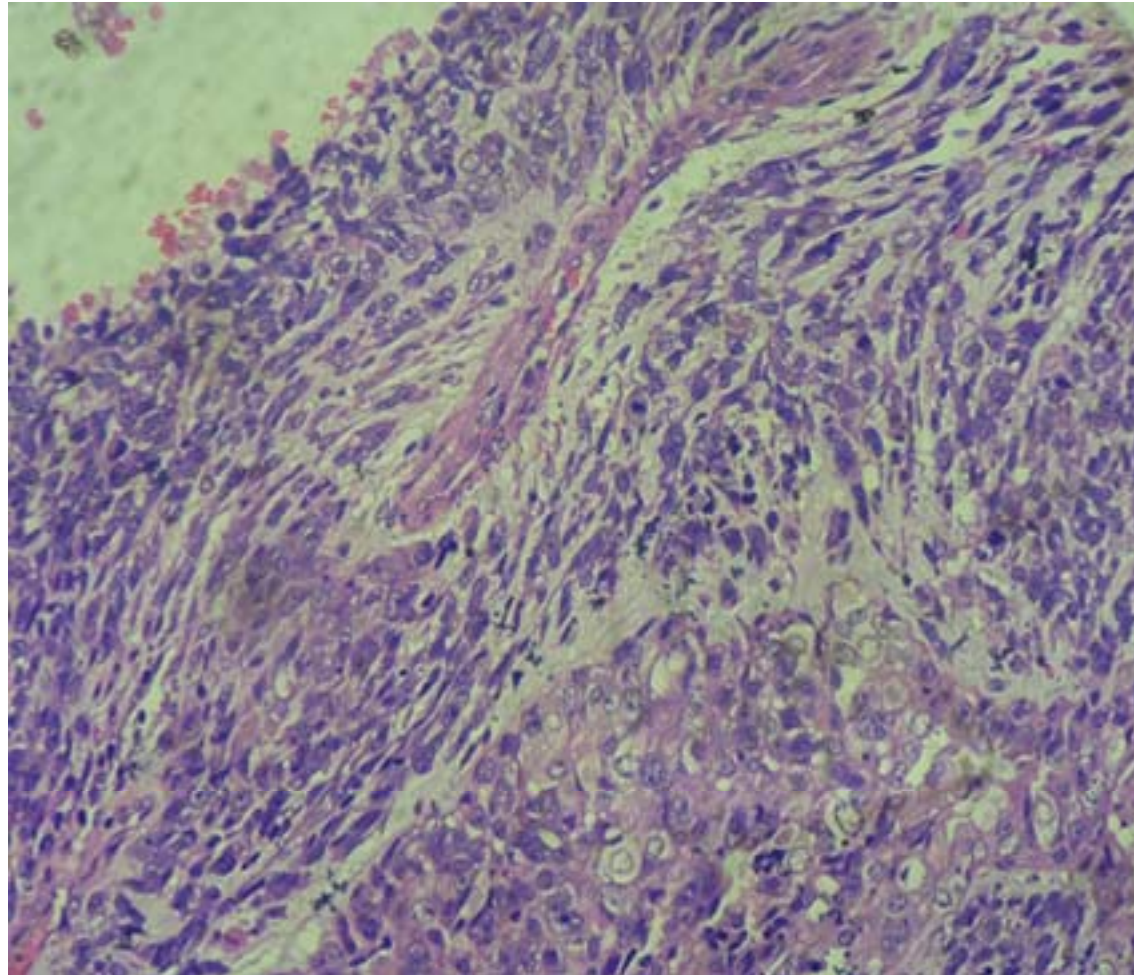
H&E



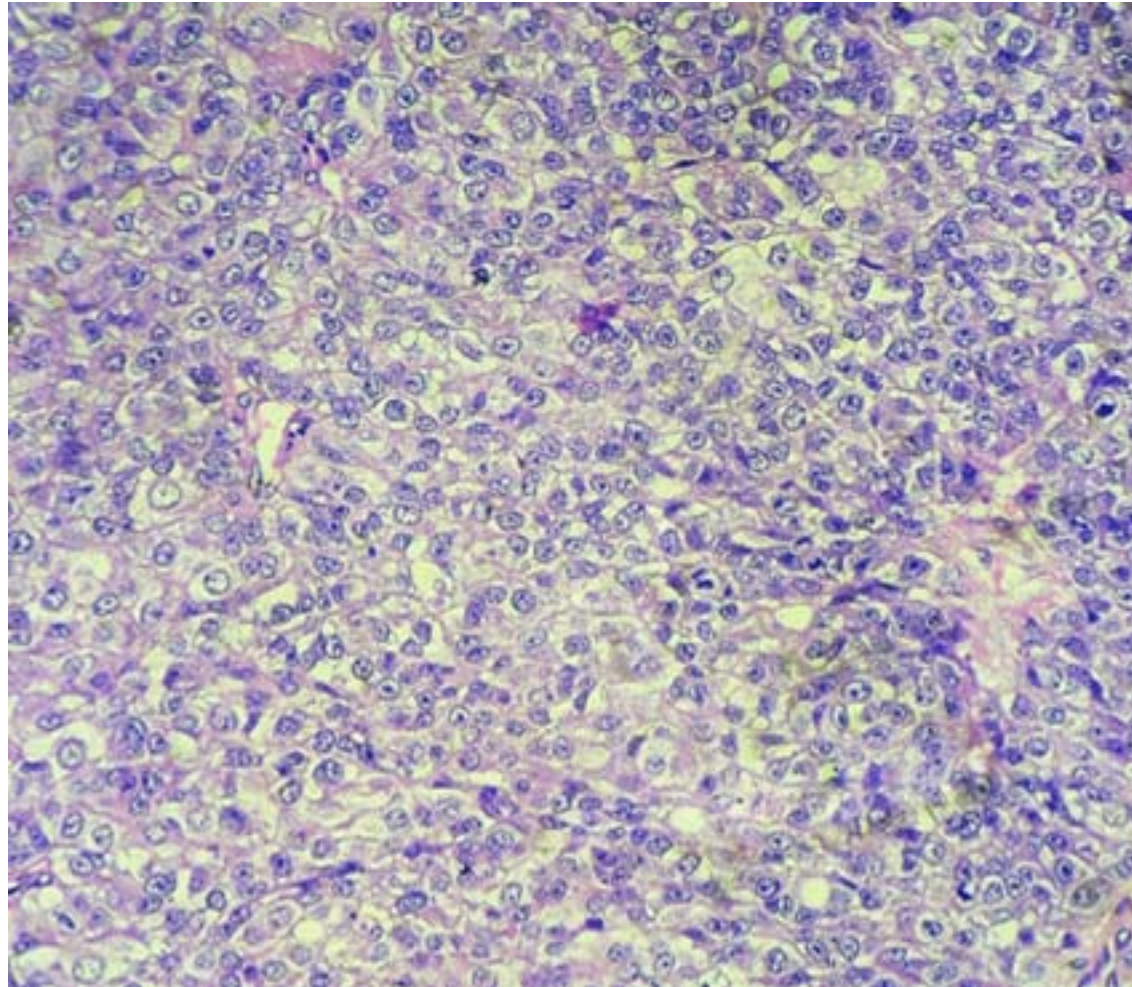
H&E



H&E



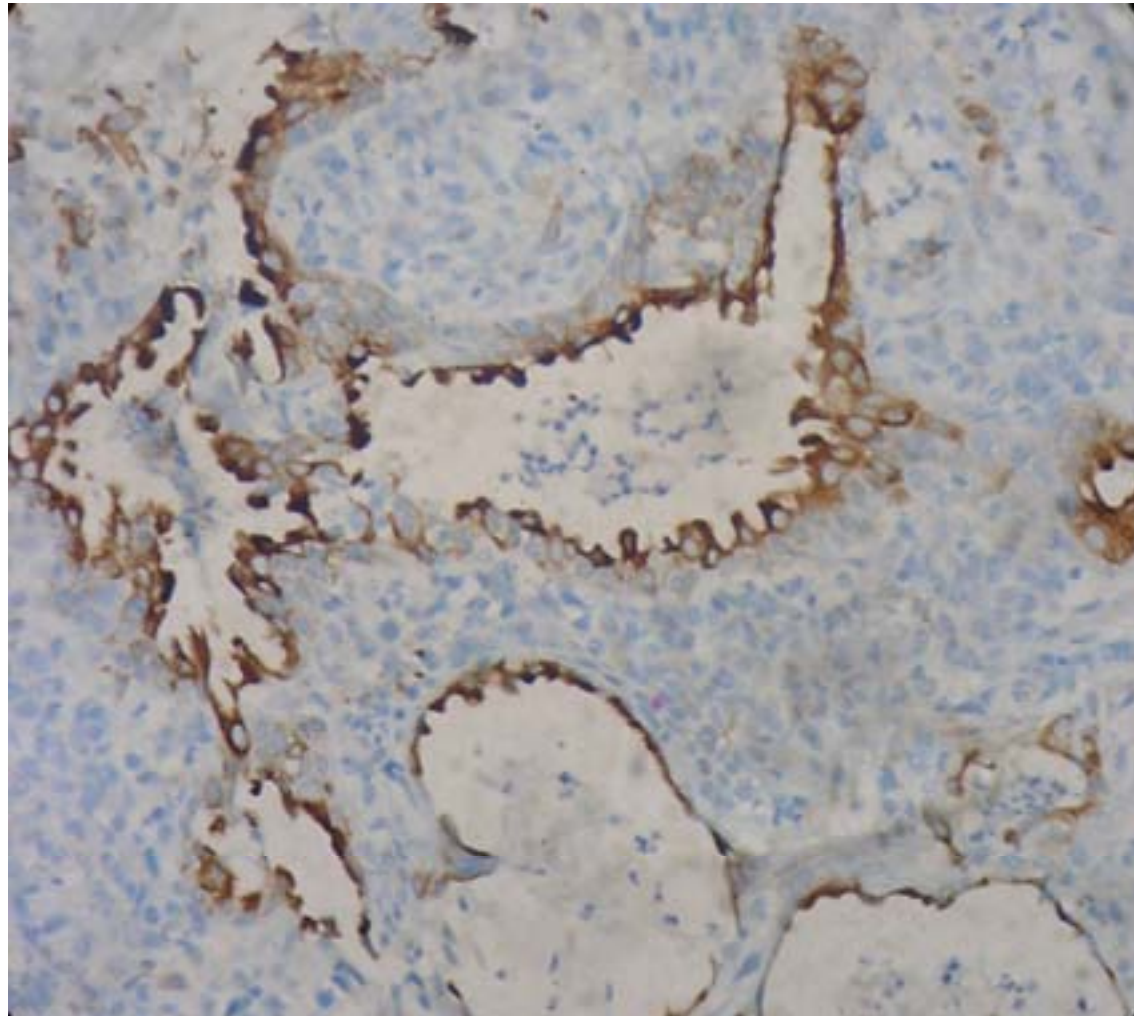
H&E



Differential Diagnosis

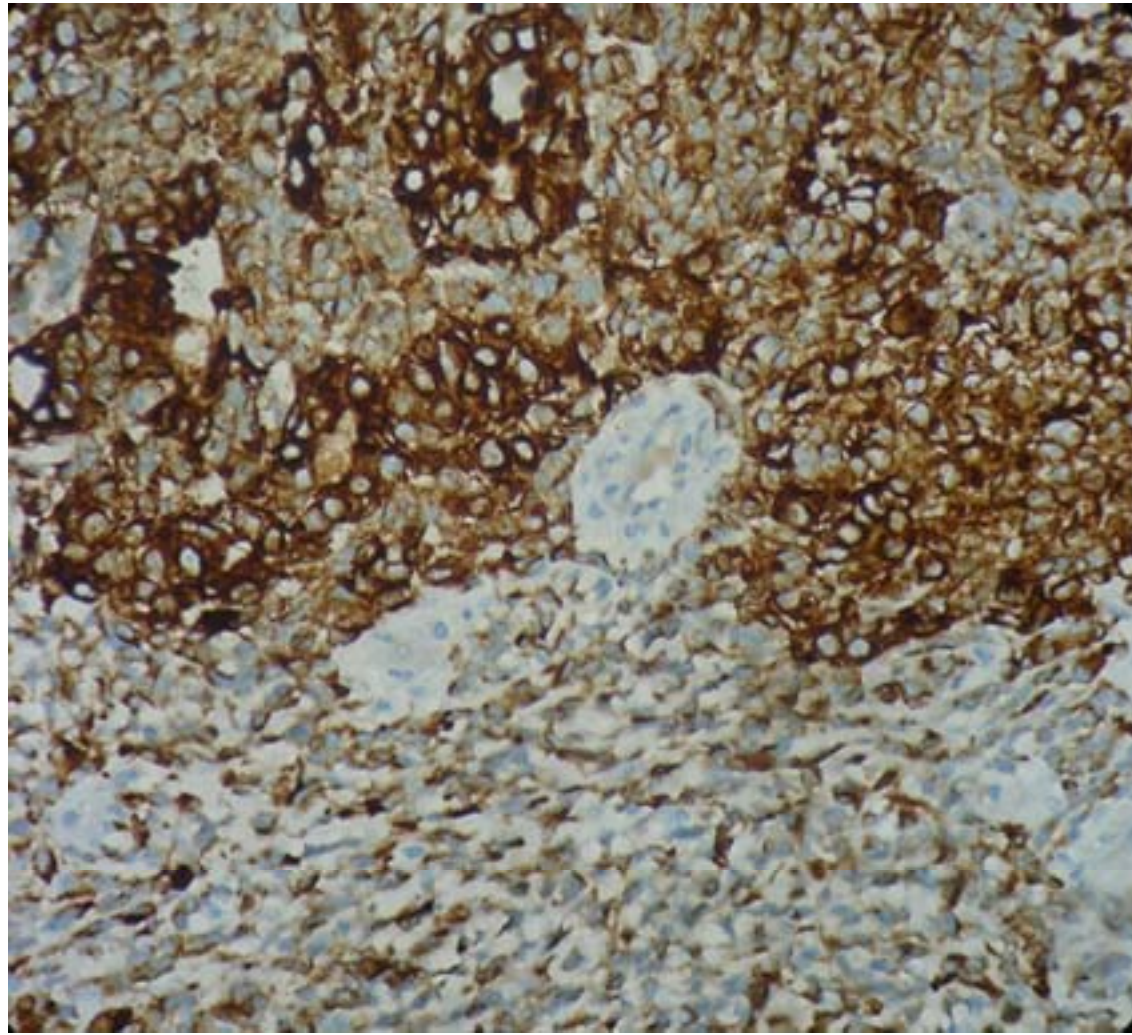
- Poorly differentiated sino-nasal tumour
 - Poorly differentiated squamous carcinoma
 - HPV-related carcinomas
 - NUT carcinoma
 - Neuroendocrine carcinoma
 - SMARCB1-deficient sinonasal carcinoma
 - Admantinoma like Ewings sarcoma

Immunohistochemistry



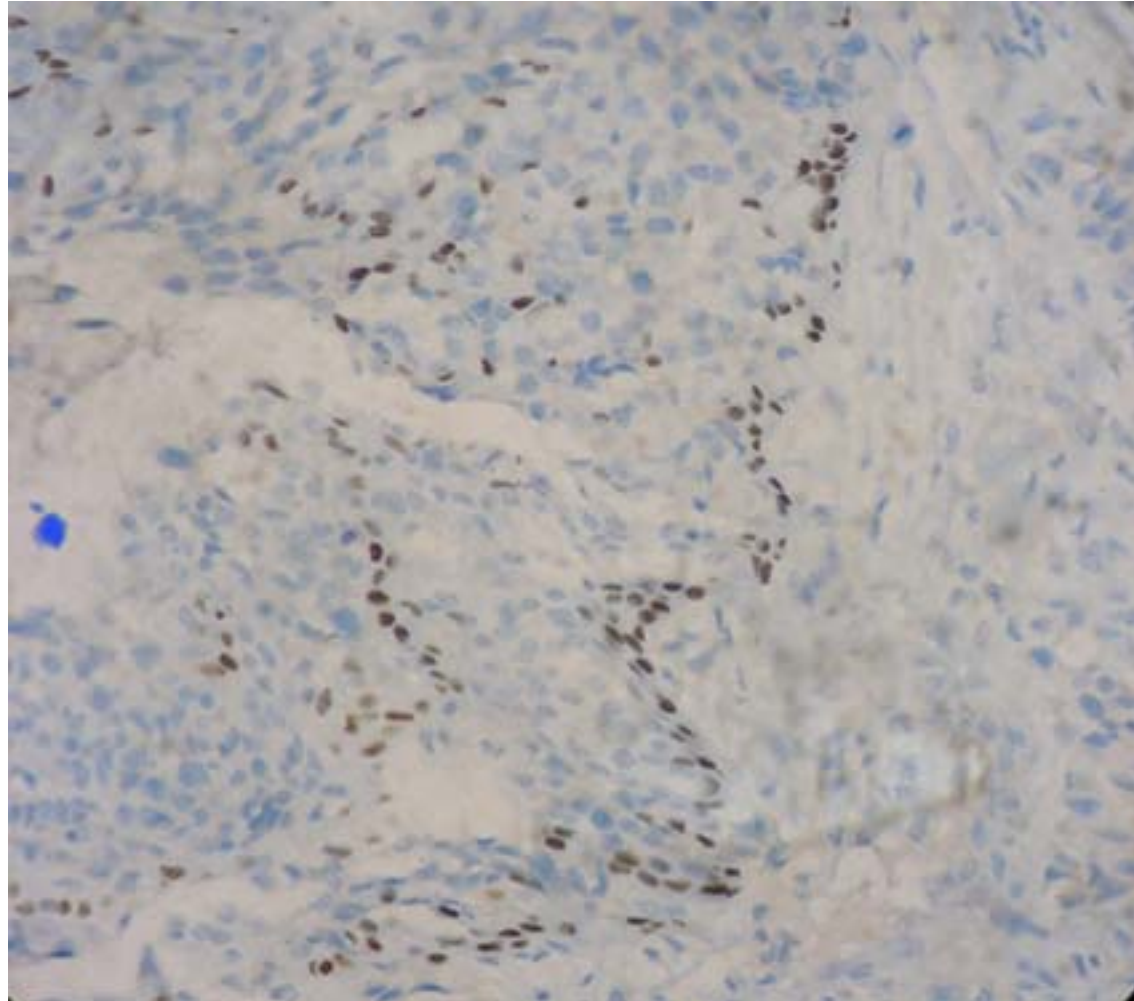
EMA

Immunohistochemistry



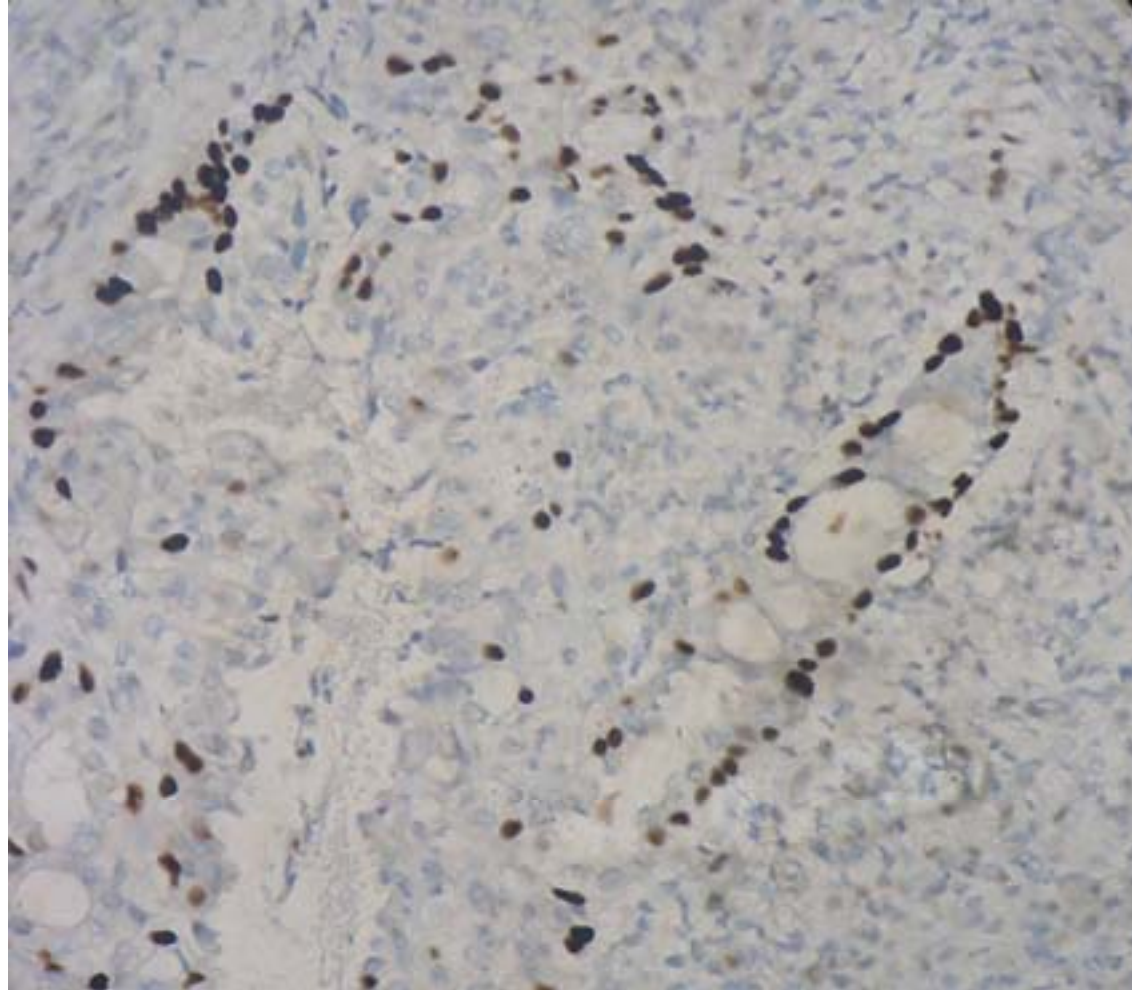
AE1/AE3

Immunohistochemistry



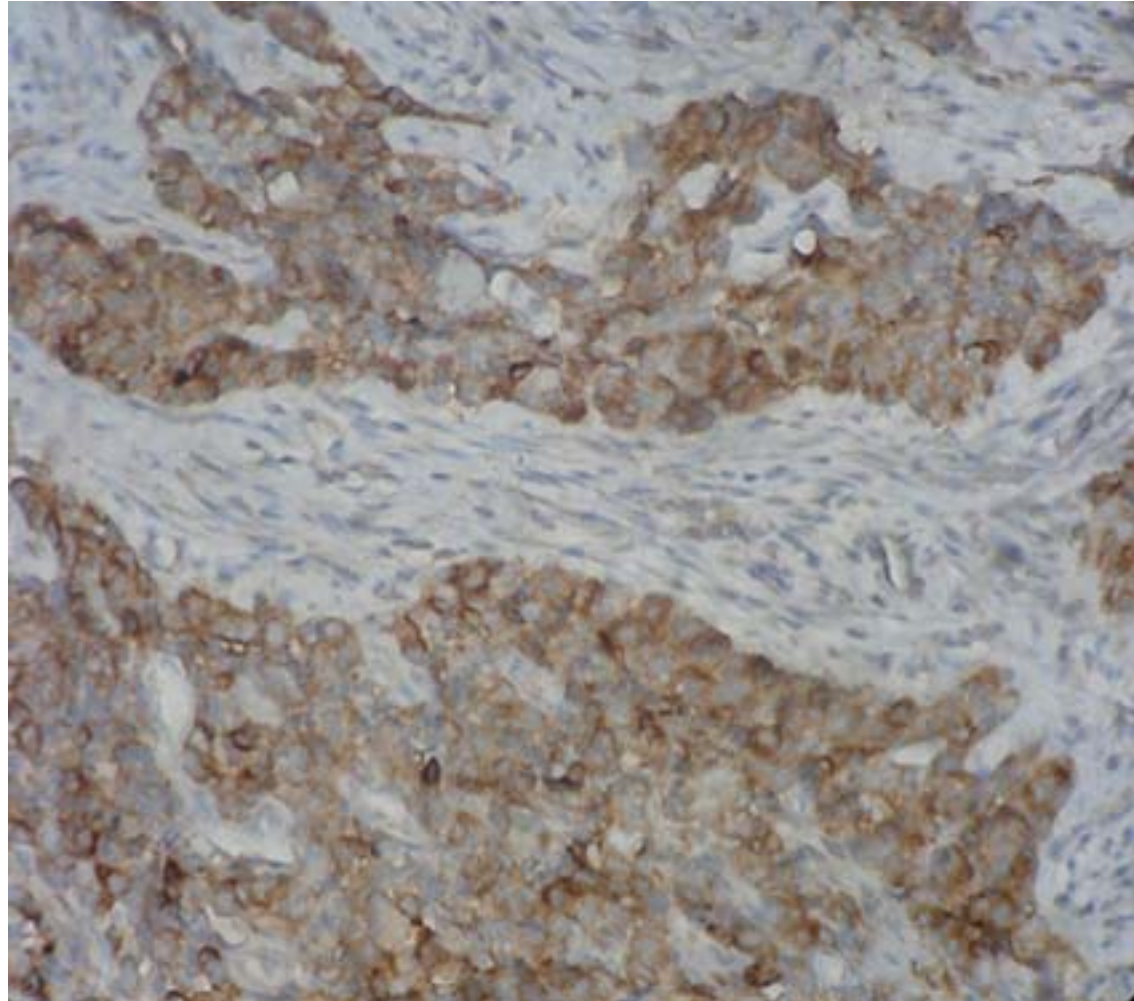
P40

Immunohistochemistry



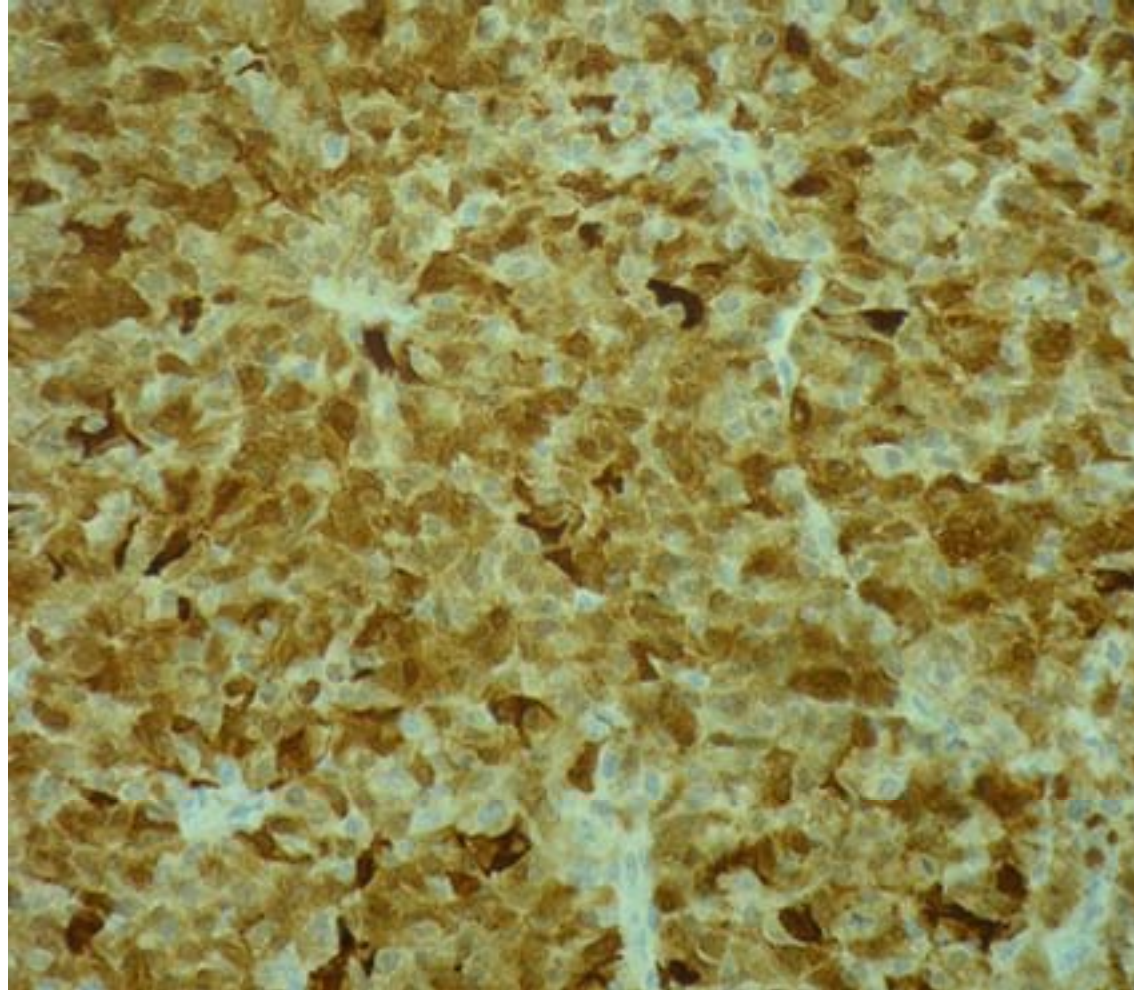
P63

Immunohistochemistry



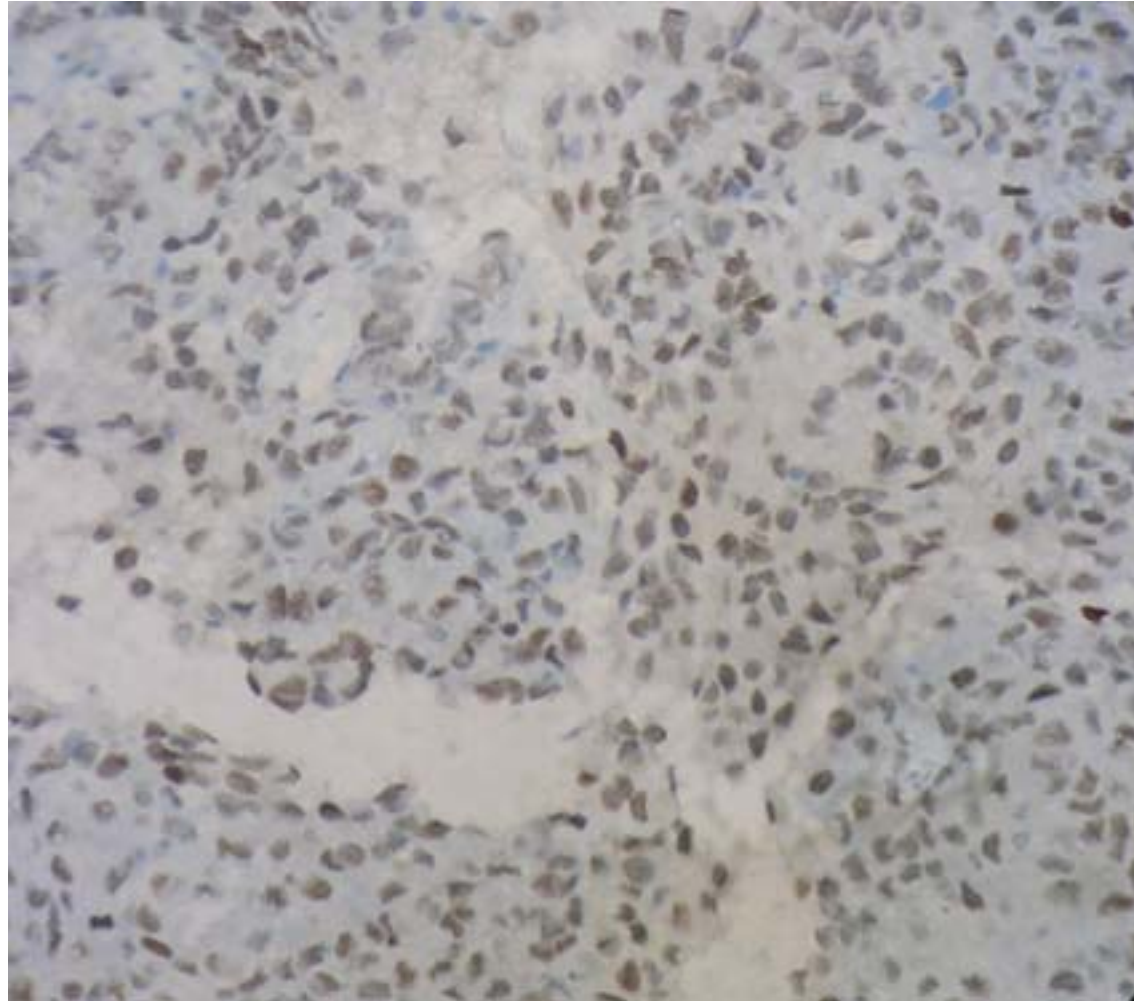
CD117

Immunohistochemistry



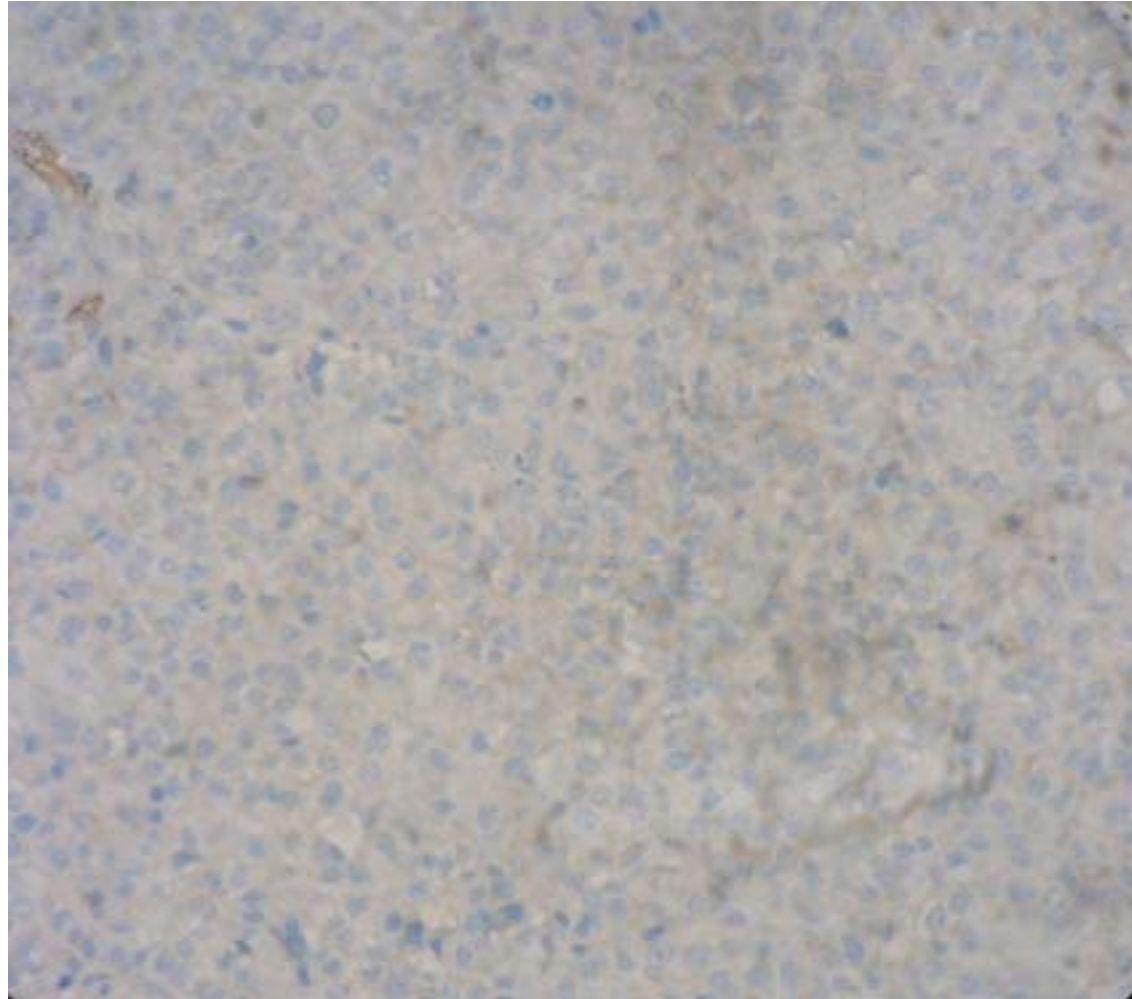
P16

Immunohistochemistry



INI1

Immunohistochemistry



**CD99, Synapto, Chromo, HMB45, Melan A,
Desmin, SMA**

Final Diagnosis

HPV related multi-
phenotypic sinonasal
carcinoma

Thank You